

Breadman



CONNECT WITH US AND
OTHER BREAD LOVERS



14 SETTINGS

White, Wheat,
French, Fast Bake,
Gluten-Free
& more

THANK YOU FOR INVESTING IN
A BREADMAN™ BREAD MAKER.

At Breadman™ we believe
"Homemade, Made Easy" is more than
just a tagline. For us it's important to
go back to the basics when it comes to
making food, by knowing what
ingredients are being used, picking
recipes that fit your dietary needs,
and (most importantly) making it easy
to make the healthy choices.

Inside this box is a detailed recipe
book with lots of things to try, but
also visit us online at Breadman.com
for new recipes, tips and tricks. If you
have any comments, questions or
concerns we're only a call away at
1-800-231-9786.



Breadman

14 SETTINGS



FEATURES A
GLUTEN FREE SETTING



15-HOUR
DELAY BAKE

- 1 Easy to read digital display
with countdown timer
- 2 3 crust color options:
Light, Medium, & Dark

- 3 3 loaf Size Options:
1.0, 1.5, & 2.0 lbs

- 4 Large Viewing Window

- 5 Dough & Bake Only
settings
- 6 Measuring cup & spoon
included



2LB PROFESSIONAL BREADMAKER



Removable nonstick
baking pan
for easy removal
and cleaning



Removable
collapsible
kneading paddle



Over 80 recipes
included



Fruit & nut
add-in dispenser

Choosing homemade
allows you to make
healthy choices that fit
your dietary concerns

- ♦ Remove preservatives, additives, dyes & allergens
- ♦ Lower sodium & sugar content
- ♦ Add more whole grains & fiber

BACK TO
Basics
BAKING

GLUTEN FREE
POTATO & CHIVE BREAD

get this recipe and more in the included
cookbook at Breadman.com

Classic French Bread

INGREDIENTS	1 LB	1 1/2 LB	2 LB
Water (80-90°F)	1 cup + 1 tsp	1 1/4 cups	1 1/2 cups
Sugar	2 tsp	1 Tbsp	1 Tbsp
Salt	1 tsp	1 1/4 tsp	1 1/2 tsp
Bread Flour	3 1/4 cups	3 3/4 cups	4 cups
Bread Machine Yeast	1 tsp	1 1/2 tsp	1 1/2 tsp

Did you know it only takes 5 ingredients to
make delicious French bread
at home?

1. Measure ingredients &
add to the bread pan.
2. Select the French
setting and then
choose the loaf size
& crust color.
3. Press START
4. Once the cycle is
complete, remove
the pan and let the
bread cool.
5. Slice & Serve!

Warning: mouthwatering aroma
of fresh bread will fill your home

Breadman

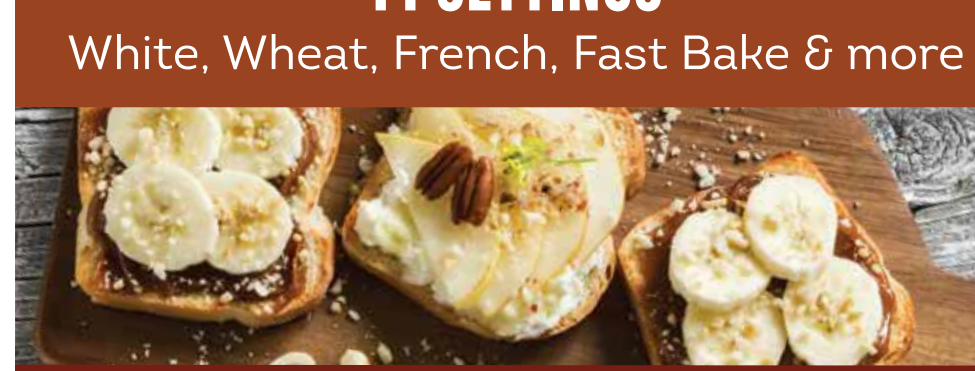
Breadman



2LB PROFESSIONAL BREAD MAKER

FAST + EASY

14 SETTINGS
White, Wheat, French, Fast Bake & more



FEATURES A GLUTEN FREE SETTING



- ♦ 3 loaf size options: 1.0, 1.5 & 2.0 lbs
- ♦ Delay bake timer up to 15 hours
- ♦ Removable nonstick bread pan
and kneading paddle for easy cleaning

2 YEAR
WARRANTY

Breadman

WHY WAIT FOR DELICIOUS
HOMEMADE BREAD?

The fast bake setting lets you make a 2lb loaf
in a little over 1 hour!

2lb Loaf with Medium crust shade	STANDARD SETTING	RAPID SETTING
White	3 hr 5 min	1 hr 8 min
Wheat	4 hr 40 min	1 hr 8 min
French	3 hr 50 min	1 hr 8 min



HAVE A
JAM SESSION!

*Make preserves, jam,
marmalade chutney or
even homemade
ketchup

CONNECT WITH US AND
OTHER BREAD LOVERS



GLUTEN-FREE
FRIENDLY

Easily make gluten-free
recipes your whole family
will love. This function was
engineered for gluten-free
dough, giving you perfect
results every time.

▲L421⁺²₋₂

▲W304⁺²₋₂

▲L421⁺²₋₂

▲W304⁺²₋₂