

BLACK+DECKER

Customer Care Line: 1-800-465-6070
 For online customer service:
www.prodprotect.com/blackanddecker
 Línea de Atención del Cliente: 1-800-465-6070
 Para servicio al cliente en línea:
www.prodprotect.com/blackanddecker

PERFORMANCE HELIX™ HAND MIXER BATIDORA DE MANO HÉLICE PERFORMANCE

use and care manual
 manual de uso y cuidado

MX610 Series

MX610B
 MX610T
 MX610P
 MX610M
 MX610W
 MX610R



Please Read and Save this Use and Care Book. IMPORTANT SAFEGUARDS

When using electrical appliances, basic safety precautions should always be followed, including the following:

- Read all instructions.
- To protect against risk of electrical shock do not immerse cord, plugs or appliance in water or other liquid.
- Close supervision is necessary when any appliance is used by or near children.
- Turn the appliance OFF. Then unplug it from the outlet: when not in use, before assembling or disassembling parts, and before cleaning. To unplug appliance, grasp the plug and pull it from the outlet. Never pull on the power cord.
- Avoid contacting moving parts. Keep hands, hair and clothing- as well as spatulas and other utensils- away from beaters during operation to reduce the risk of injury to persons, and/or damage to the mixer.
- Do not operate appliance with a damaged cord or plug, or after the appliance malfunctions or has been dropped or damaged in any manner. Contact Consumer Support at the toll-free number listed in the warranty section. This appliance has important markings on the plug blade. The attachment plug or entire cordset (if plug is molded onto cord) is not suitable for replacement. If damaged, the appliance must be replaced.
- The use of attachments not recommended or sold by the manufacturer may cause fire, electric shock or injury.
- Do not use outdoors.
- Do not let cord hang over edge of table or counter.
- Do not let cord contact hot surface, including the stove.
- Remove beaters from mixer before washing.
- This appliance is not intended for use by persons (including children) with reduced physical, sensory or mental capabilities, or lack of experience and knowledge, unless they have been given supervision or instruction concerning use of the appliance by a person responsible for their safety.
- Children should be supervised to ensure that they do not play with the appliance.
- The maximum rated wattage for this product was obtained with the dough hooks. Other recommended attachments may draw significantly less power or current.

SAVE THESE INSTRUCTIONS.

This product is for household use only.

POLARIZED PLUG (120V models only)

This appliance has a polarized plug (one blade is wider than the other). To reduce the risk of electric shock, this plug is intended to fit into a polarized outlet only one way. If the plug does not fit fully into the outlet, reverse the plug. If it still does not fit, contact a qualified electrician. Do not attempt to modify the plug in any way.

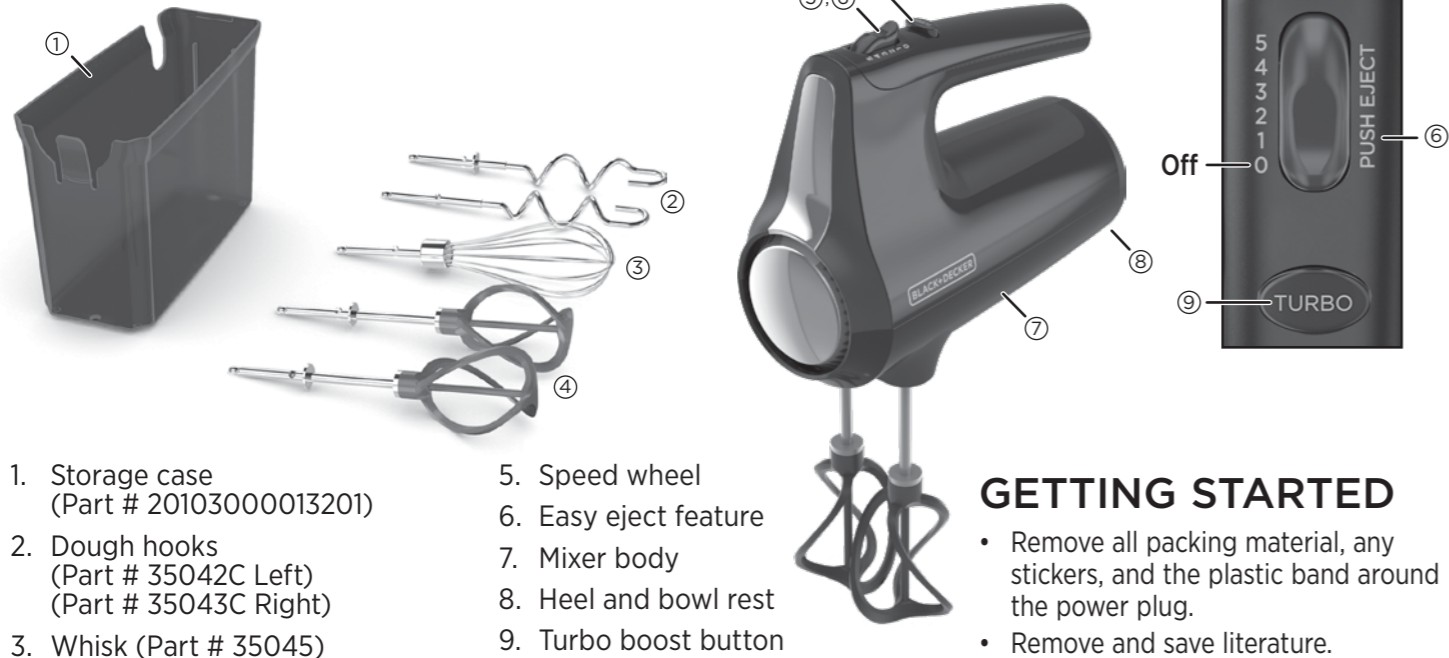
TAMPER-RESISTANT SCREW

Warning: This appliance is equipped with a tamper-resistant screw to prevent removal of the outer cover. To reduce the risk of fire or electric shock, do not attempt to remove the outer cover. There are no user-serviceable parts inside. Repair should be done only by authorized service personnel.

ELECTRICAL CORD

- A short power-supply cord is provided to reduce the risks resulting from becoming entangled in or tripping over a longer cord.
 - Extension cords are available and may be used if care is exercised in their use.
 - If an extension cord is used:
 - The marked electrical rating of the extension cord should be at least as great as the electrical rating of the appliance; and
 - The cord should be arranged so that it will not drape over the counter top or tabletop where it can be pulled on by children or tripped over.
- Note:** If the power cord is damaged, please contact the warranty department listed in these instructions.

PARTS AND FEATURES



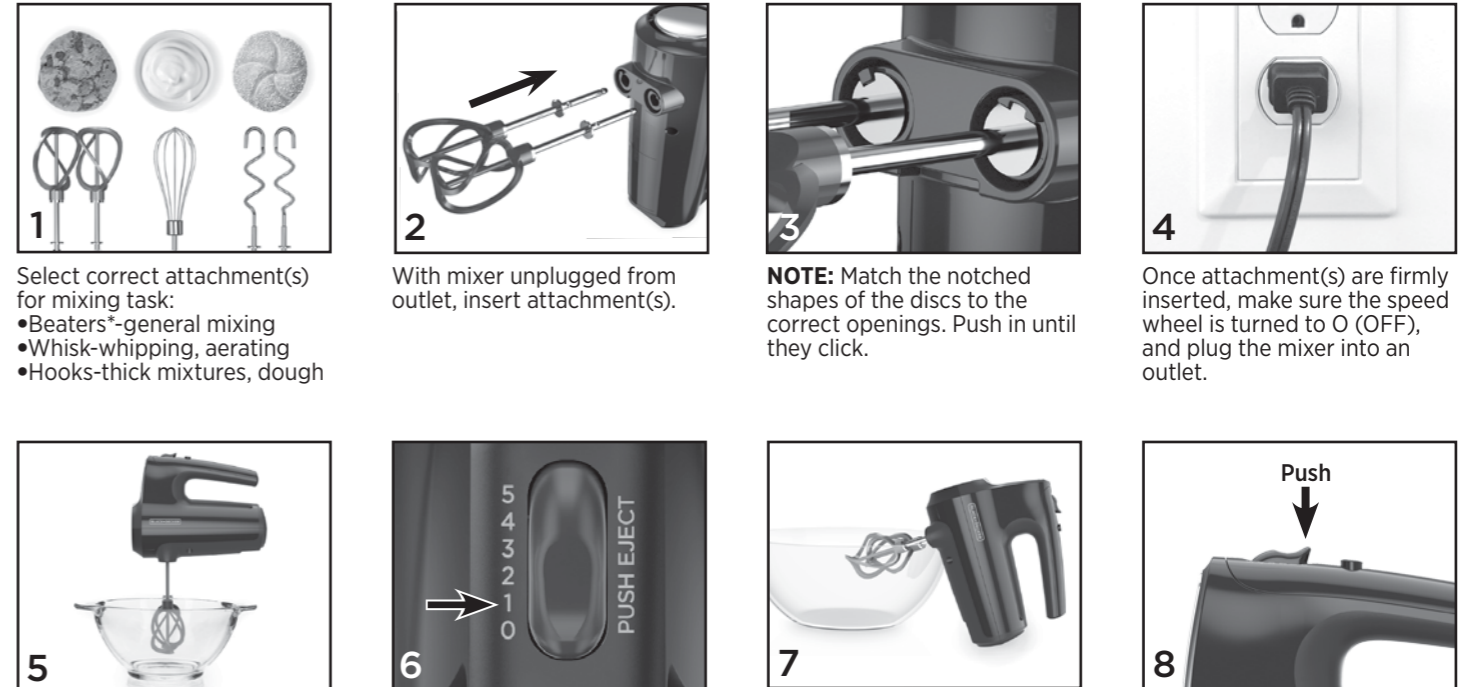
1. Storage case (Part # 20103000013201)
2. Dough hooks (Part # 35042C Left) (Part # 35043C Right)
3. Whisk (Part # 35045)
4. Helix™ beaters (Part # 20103000011001 Left) (Part # 2010300001101 Right)
5. Speed wheel
6. Easy eject feature
7. Mixer body
8. Heel and bowl rest
9. Turbo boost button

GETTING STARTED

- Remove all packing material, any stickers, and the plastic band around the power plug.
- Remove and save literature.
- Please go to www.prodprotect.com/blackanddecker to register your warranty.
- Wash all removable parts.

Product may vary slightly from what is illustrated.

HOW TO USE



Select correct attachment(s) for mixing task:
 • Beaters-general mixing
 • Whisk-whipping, aerating
 • Hooks-thick mixtures, dough

With mixer unplugged from outlet, insert attachment(s).

NOTE: Match the notched shapes of the discs to the correct openings. Push in until they click.

Once attachment(s) are firmly inserted, make sure the speed wheel is turned to O (OFF), and plug the mixer into an outlet.

For least-mess mixing: Before turning on, insert attachment(s) into the center of food at a 90 degree angle.

NOTE: Begin all mixing tasks on speed #1, then increase speed as needed.

TIP: To scrape the bowl with a spatula, first turn mixer off then place mixer on heel rest.

When finished, turn speed wheel to O (OFF) and unplug mixer. Then press wheel downwards to eject attachment(s).

*If the mixture becomes too thick while using beaters, switch to using the dough hooks.

WHAT SPEED TO USE

1 (Low)	2 (Low/Med)	3 (Medium)	4 (Med/High)	5 (High)	TURBO (high speed burst)
Stir	Combine	Mix	Blend	Beat/Whip	
Combining dry and wet ingredients. Adding to mixtures: nuts, dried fruits, chocolate chips.	Preparing puddings; mixing dough or thin batter.	Creaming butter and sugar; mixing cake batters and frostings.	Beating whole eggs or frozen desserts; mixing light batter, such as for popovers.	Whipping cream and egg whites; mashing potatoes.	Use at any speed setting to get maximum power for tough mixing tasks.

HOW TO CLEAN

Wipe mixer body with damp cloth and dry thoroughly with a dry cloth. Wash attachments in warm water with dish detergent, or on the top shelf of the dishwasher.

STORAGE

Store all attachments and power cord in the storage case. Insert bottom of mixer into case and snap together for storage.

WARRANTY AND CUSTOMER SERVICE INFORMATION

Three-Year Limited Warranty (Applies only in the United States and Canada)

For service, repair or any questions regarding your appliance, call the appropriate 800 number listed within this section. Please **DO NOT** return the product to the place of purchase. Also, please **DO NOT** return product back to manufacturer, nor bring it to a service center. You may also want to consult the website listed in this manual.

What does it cover?

- Any defect in material or workmanship provided; however, Spectrum Brands Inc's liability will not exceed the purchase price of product.

For how long?

- Three years from the date of original purchase with proof of purchase.

What will we do to help you?

- Provide you with a reasonably similar replacement product that is either new or factory refurbished.

How do you get service?

- Save your receipt as proof of date of sale.
- Visit the online service website at www.prodprotect.com/blackanddecker, or call toll-free 1-800-465-6070, for general warranty service.
- If you need parts or accessories, please call 1-800-738-0245.

What does your warranty not cover?

- Damage from commercial use
- Damage from misuse, abuse or neglect
- Products that have been modified in any way
- Products used or serviced outside the country of purchase
- Glass parts and other accessory items that are packed with the unit
- Shipping and handling costs associated with the replacement of the unit
- Consequential or incidental damages (Please note, however, that some states do not allow the exclusion or limitation of consequential or incidental damages, so this limitation may not apply to you.)

How does state law relate to this warranty?

- This warranty gives you specific legal rights. You may also have other rights that vary from state to state or province to province.

Are there additional warranty exclusions?

- **This warranty shall not be valid where it is contrary to U.S. and other applicable laws, or where the warranty would be prohibited under any economic sanctions, export control laws, embargos, or other restrictive trade measures enforced by the United States or other applicable jurisdictions. This includes, without limitation, any warranty claims implicating parties from, or otherwise located in, Cuba, Iran, North Korea, Syria and the disputed Crimea region.**

BLACK+DECKER



Comercializado por:
 Spectrum Brands de México,
 SA de C.V Avenida 1° de Mayo No. 120
 Piso 7, Oficina 702.
 Colonia San Andres Atoto,
 C.P. 53500 Naucalpan de Juárez,
 Estado de México, México

SERVICIO Y REPARACIÓN

Art. 123 No. 95 Col. Centro, C.P. 06050
 Deleg. Cuauhtemoc Servicio al Consumidor,
 Venta de Refacciones y Accesorios 01 800
 714 2503

Importado y Distribuido por:

SPECTRUM BRANDS ARGENTINA S.R.L.
 Av. Del Libertador 6810,
 piso 2 dpto. A
 1429, CABA, Argentina
 + 54 11 5353-9500
 CUIT: 30-70706168-1
 Importador N° # 76983

IMPORTADO POR / IMPORTED BY:

AIDISA BOLIVIA S.A.
 Av. Chacaltaya No. 2141- Zona
 Achachicala La Paz, Bolivia.
 Teléfono (591)2- 2305353
 NIT 1020647023,
 Resolución Ministerial 0661-12.

IMPORTADO POR / IMPORTED BY:

Inversiones la Mundial Ltda.
 Rut: 78.146.900-9
 Libertad 790, Santiago - Chile
 Fono: (562) 26810217 info@ilm.cl

IMPORTADO POR / IMPORTED BY:

Spectrum Brands de México, SA de C.V
 Avenida 1° de Mayo No. 120
 Piso 7, Oficina 702. Colonia San Andres
 Atoto,

C.P. 53500 Naucalpan de Juárez, Estado
 de México, México
 Para atención de garantía marque:
 01 (800) 714 2503

IMPORTADO POR / IMPORTED BY:

Spectrum Brands Corp. S.A.S.
 Transversal 23 #97-73
 Oficinas 403-404-405,
 Bogotá, Colombia
 Línea Servicio al Cliente:
 018000510012

IMPORTADO POR / IMPORTED BY:

ETL Intertek
 Made in China.
 Fabricado en China.

Sello del Distribuidor:

Fecha de compra:

Modelo:

Código de fecha / Date Code / Le code de date :

250W max 120V~ 60Hz.

COMERCIALIZADO POR:

SPECTRUM BRANDS DE MEXICO, S.A. DE C.V.
 Avenida 1° de Mayo No. 120 Piso 7, Oficina 702. Colonia
 San Andres Atoto, C.P.53500 Naucalpan de Juárez,
 Estado de México, México
 Tel. 01-800-714-2503

SERVICIO Y REPARACIÓN

Art. 123 No. 95 Col. Centro, C.P. 06050 Deleg.
 Cuauhtemoc SERVICIO AL CONSUMIDOR.
VENTA DE REFACCIONES Y ACCESORIOS
 01 800 714 2503

© 2021 Spectrum Brands, Inc., Middleton, WI 53562
 All rights reserved.

BLACK+DECKER and the BLACK+DECKER logos are trademarks of The Black & Decker Corporation, used under license by Spectrum Brands, Inc. for its manufacturing and sale of this product. All rights reserved.

BLACK+DECKER y los logotipos BLACK+DECKER son marcas registradas de Black & Decker Corporation, utilizados por Spectrum Brands, Inc. bajo su licencia para su manufactura y venta de este producto. Todos los derechos reservados.

At the end of this product's life, you can mail it to Spectrum Brands at 507 Stokely Drive, Deforest, WI 53532 marked "Product Takeback: Please Recycle!"

Al final de la vida útil de este producto, puede enviarlo por correo a Spectrum Brands, 507 Stokely Drive, Deforest, WI 53532 marcado "Product Takeback: Please Recycle!"

